

The image shows the interior of a bar named Atomic 50. The most prominent feature is the ceiling, which is a complex, multi-layered structure of dark metal beams and panels, creating a grid-like pattern. Below the ceiling, there is a mezzanine level with a glass railing, where several bottles of liquor are displayed. The bar area is in the foreground, with a long counter and several high-top stools. The walls are made of brick, and the lighting is warm and ambient. The overall atmosphere is industrial and modern.

Atomic**50** CEILING & WALL PANELS

A&D Presentation

History of Tin Ceilings (in a nutshell).

- In existence in US since mid-1800s to (inexpensively) emulate European plaster ceilings.
- Gained traction by early 1900s due to mass production. Start seeing them in hotels, libraries, banks, churches, city halls, and private residences from around that time.
- During Great Depression and WWI, their popularity gave way to alternative building materials and weapon/vehicle manufacturing.





Resurgence of Tin Ceilings.

- Today, back in style for the character and individuality they lend to a space.
- Installed in all types of public, commercial, and residential properties.
- Ideal for hotels, restaurants, night clubs, casinos, lobby areas, retail stores, and private residences.
- Style revival by interior designers and architects for their design variety backed by commercial durability.

Atomic**50**

Why Tin Ceilings?

- 'Built to last' durability
- Low maintenance
- Lightweight
- Fire Rating
- Visual Performance





Atomic**50**

Why Atomic 50?

- 6 Installation Types: Drop-In, Nail-Up, Backsplash, Acoustic Drop-In, Acoustic Nail-Up, Snap Lock.
- Over 35 patterns and 50 colors to complement any project.
- 2'x2' tiles, made from original .010 tin plated steel.
- Expert consultation to assist with design, layout and product selection.
- Acoustical panels reduce noise in open spaces
- Sample program available

Installation Types



Atomic**50**

Simple Installation:

- Panels
- Crown Molding



Atomic**50**



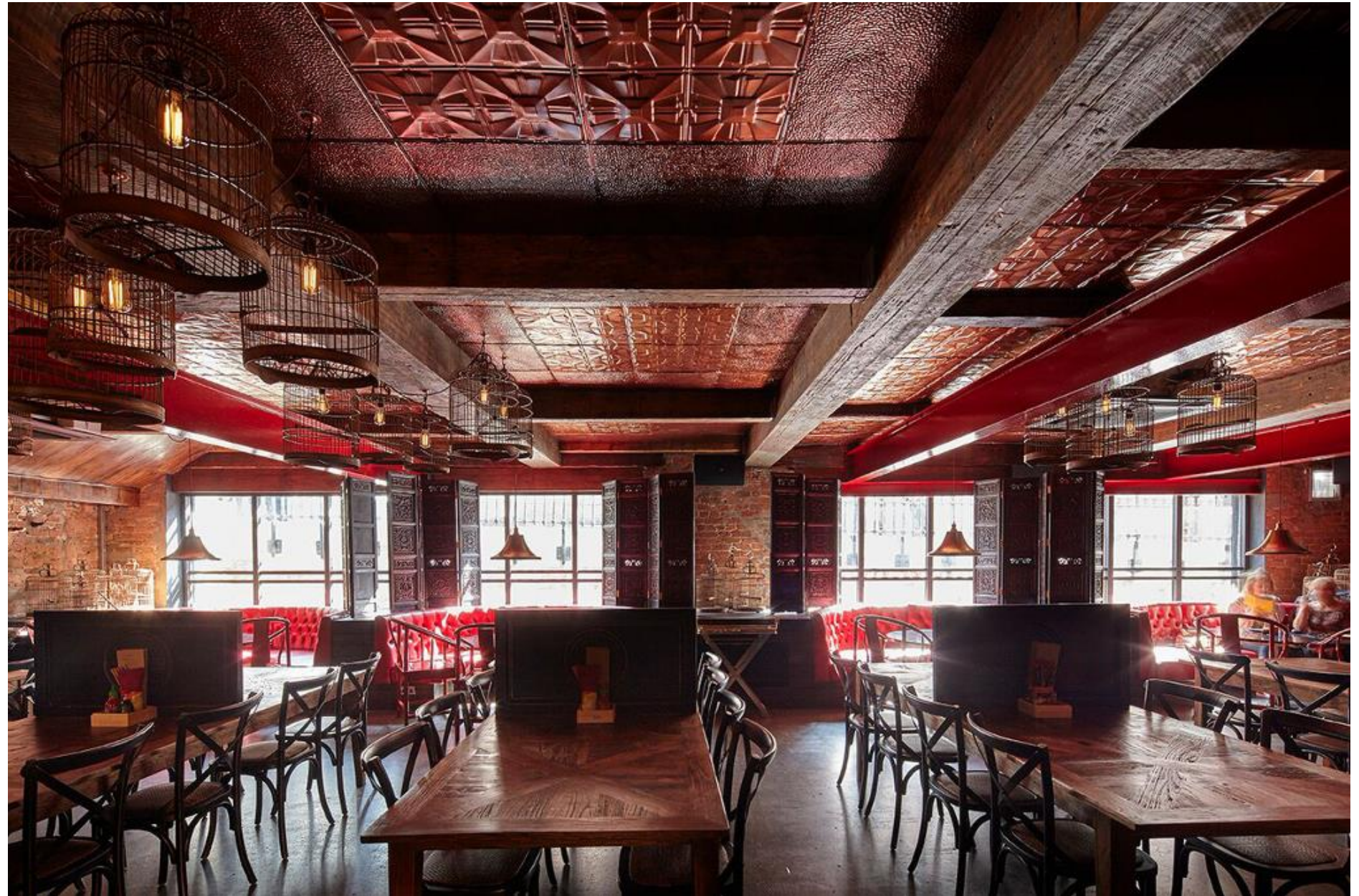
Simple Installation:

- Panels only
- No molding

Atomic**50**

Simple Installation:

- Panels
- Filler Panels



Atomic**50**



Complex Installation:

- Panels
- Flat Molding
- Crown Molding

Atomic**50**

Complex Installation:

- Panels
- Filler Panels
- Molding





Installation Projects

Atomic**50**

Ceiling | Restaurant



Atomic**50**

Backsplash | Salon





Ceiling | Bar

Atomic**50**

Ceiling | Bakery





Ceiling, Accent Wall
Restaurant

Atomic**50**

Ceiling | Office





Atomic**50**

Ceiling | Barber Shop



About Us

Atomic 50 offers an extensive selection of tin panels for ceilings, walls, retail accents, and backsplashes for residential and commercial applications. With high quality finishes, diverse patterns, competitive pricing, quick shipping, design support, and personalized service, it's easy to see why we're the preferred manufacturer of tin ceiling tiles across the US, Canada and the world. Made in the USA.

A photograph of a classic bar interior. The bar has a long, curved counter with a dark wood base. Several dark wood stools with tufted leather seats are lined up along the counter. The background shows shelves stocked with various bottles of liquor and glassware. The lighting is warm and ambient, with several pendant lights hanging from the ceiling. The overall atmosphere is cozy and traditional.

Atomic**50** Thank You!